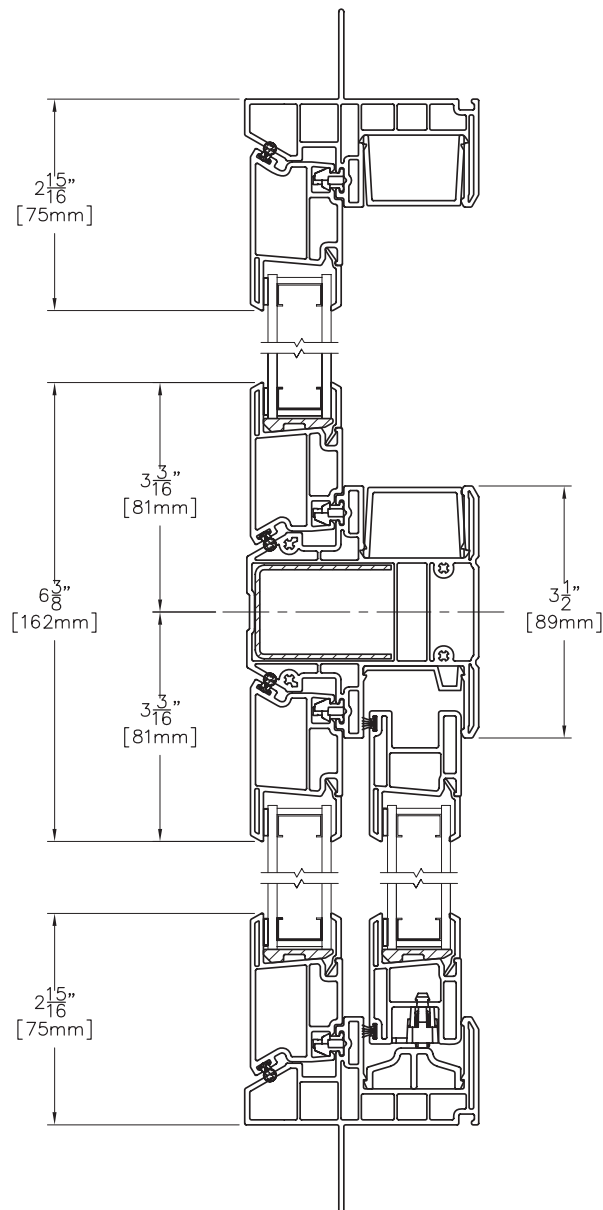


Assembly Drawing:

IMR 8120 Half Vent Below

8000M
SERIES
MONTECITO

Vertical View



Scale: 6" = 1' (1/2 scale)

8000M COMBO-1
NOVEMBER 2008

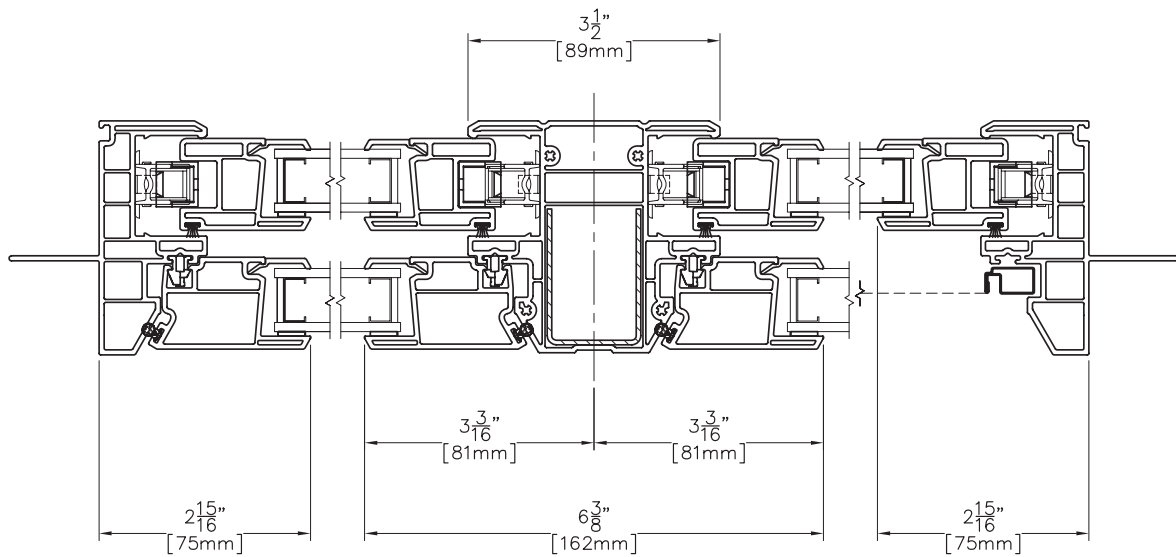
*Due to continual product research and development, details may be changed at any time. ©2008
Products shown are not available at all locations – confirm availability with your local Milgard representative.*

Assembly Drawing:

IMR 8220 Double Single Hung

8000M
SERIES
MONTECITO

Horizontal View



Scale: 6" = 1' (1/2 scale)

*Due to continual product research and development, details may be changed at any time. ©2008
Products shown are not available at all locations – confirm availability with your local Milgard representative.*

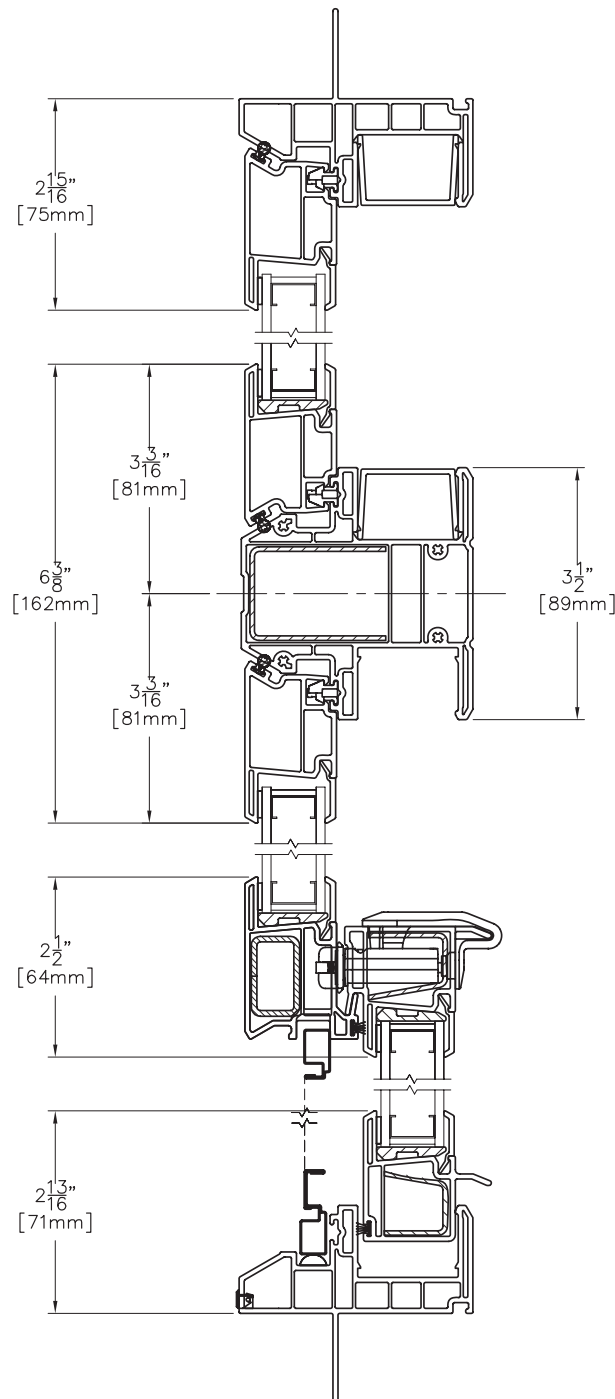
8000M COMBO-2
NOVEMBER 2008

Assembly Drawing:

IMR 8220 Single Hung Below

8000M
SERIES
MONTECITO

Vertical View



Scale: 6" = 1' (1/2 scale)

8000M COMBO-3
NOVEMBER 2008

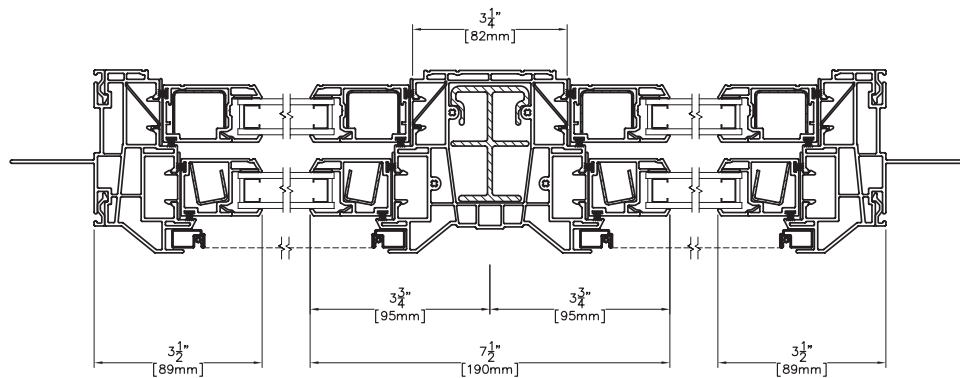
*Due to continual product research and development, details may be changed at any time. ©2008
Products shown are not available at all locations – confirm availability with your local Milgard representative.*

Assembly Drawing:

IMR 8225 Double Double Hung

8000M
SERIES
MONTECITO

Horizontal View



Scale: 6" = 1' (1/2 scale)

*Due to continual product research and development, details may be changed at any time. ©2008
Products shown are not available at all locations – confirm availability with your local Milgard representative.*

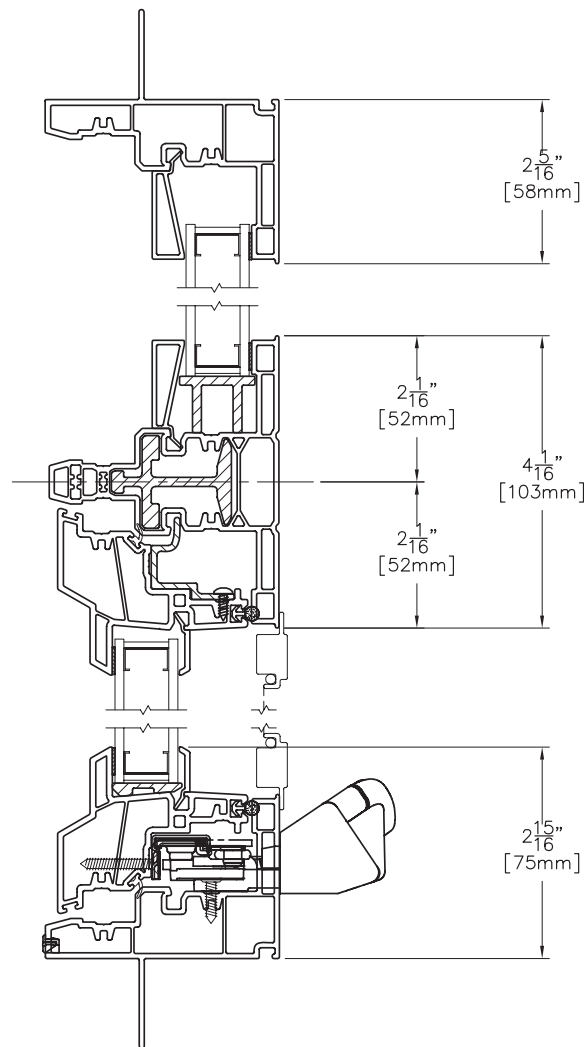
8000M COMBO-4
NOVEMBER 2008

Assembly Drawing:

IMR 8420 Awning Below

8000M
SERIES
MONTECITO

Vertical View



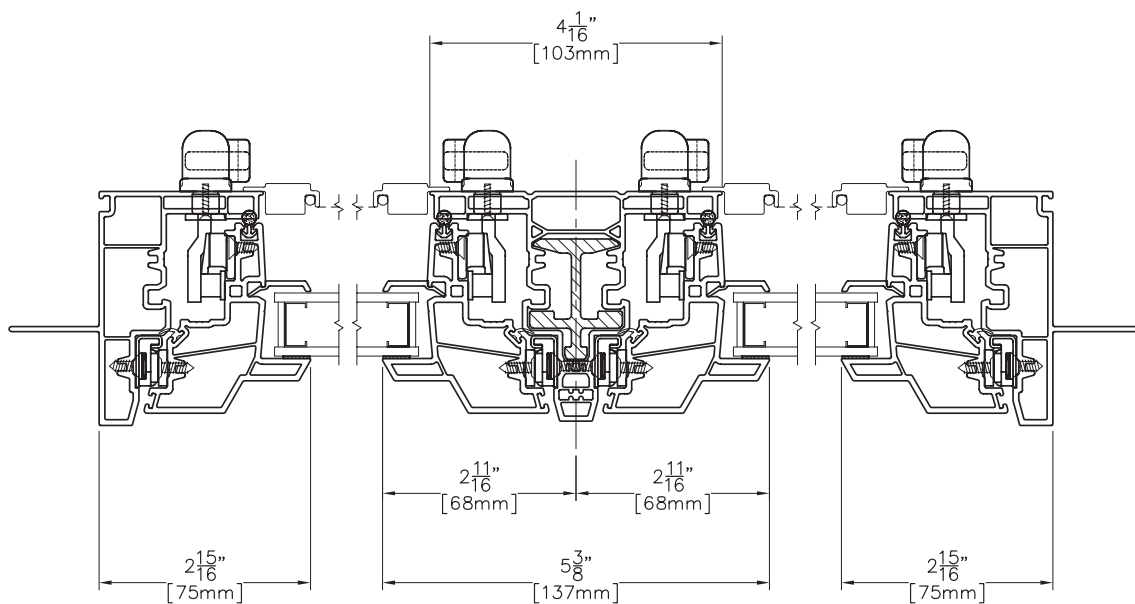
Scale: 6" = 1' (1/2 scale)

Assembly Drawing:

IMR 8420 Double Awning

8000M
SERIES
MONTECITO

Horizontal View



Scale: 6" = 1' (1/2 scale)

*Due to continual product research and development, details may be changed at any time. ©2008
Products shown are not available at all locations – confirm availability with your local Milgard representative.*

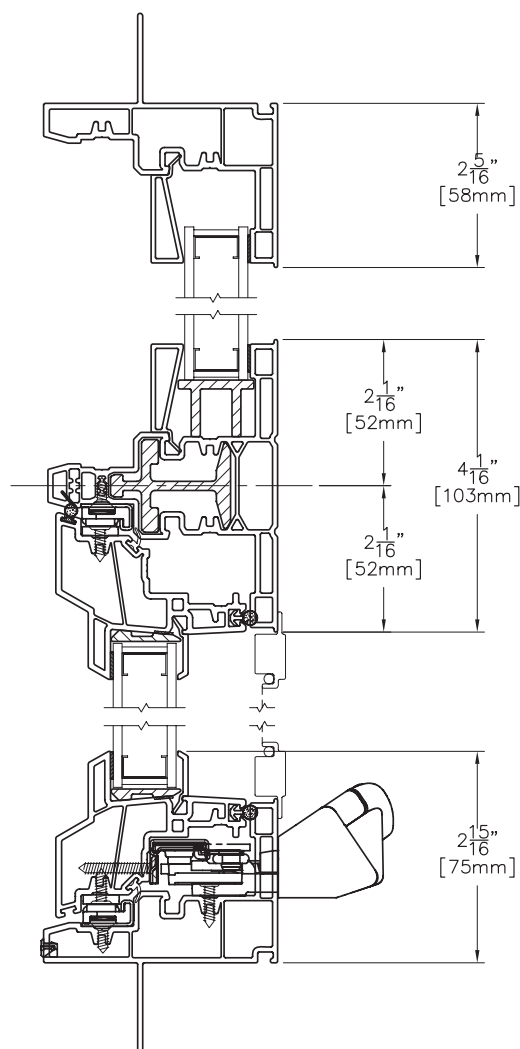
8000M COMBO-6
NOVEMBER 2008

Assembly Drawing:

IMR 8520 Casement Below

8000M
SERIES
MONTECITO

Vertical View



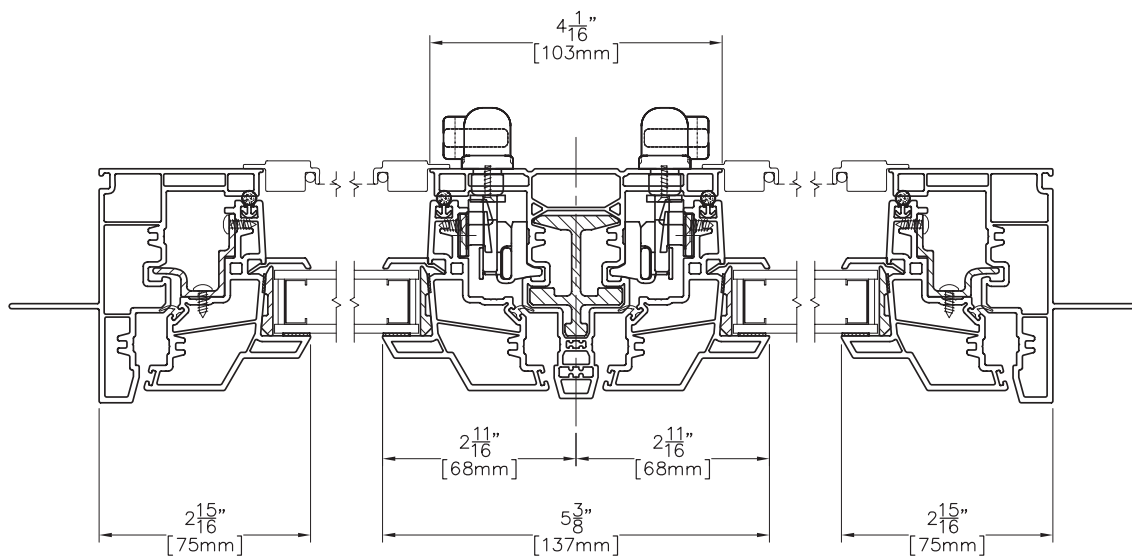
Scale: 6" = 1' (1/2 scale)

Assembly Drawing:

IMR 8520 Double Casement

8000M
SERIES
MONTECITO

Horizontal View



Scale: 6" = 1' (1/2 scale)

*Due to continual product research and development, details may be changed at any time. ©2008
Products shown are not available at all locations – confirm availability with your local Milgard representative.*

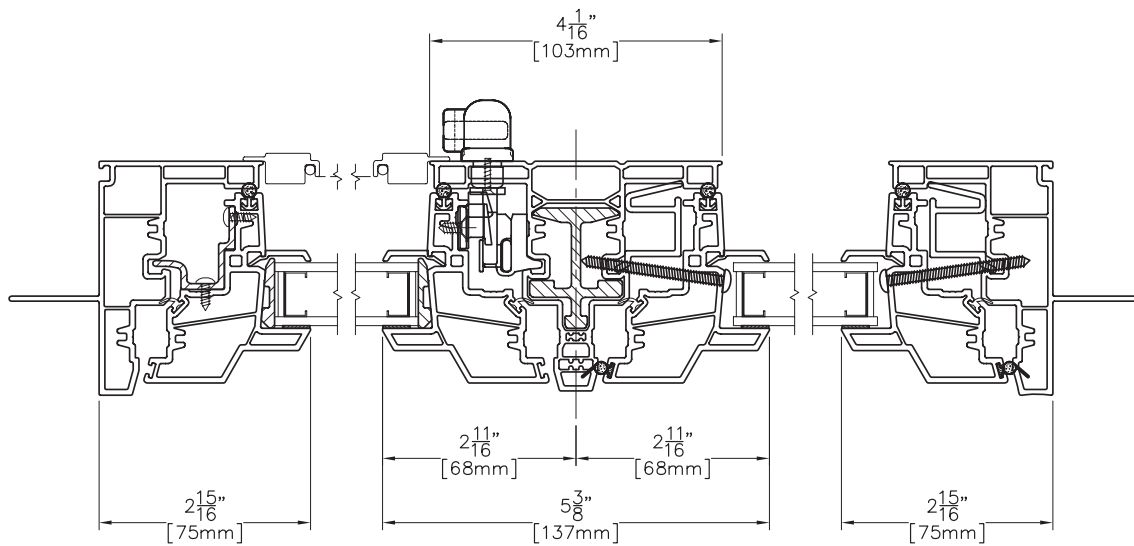
8000M COMBO-8
NOVEMBER 2008

Assembly Drawing:

IMR 8520 Single Casement

8000M
SERIES
MONTECITO

Horizontal View



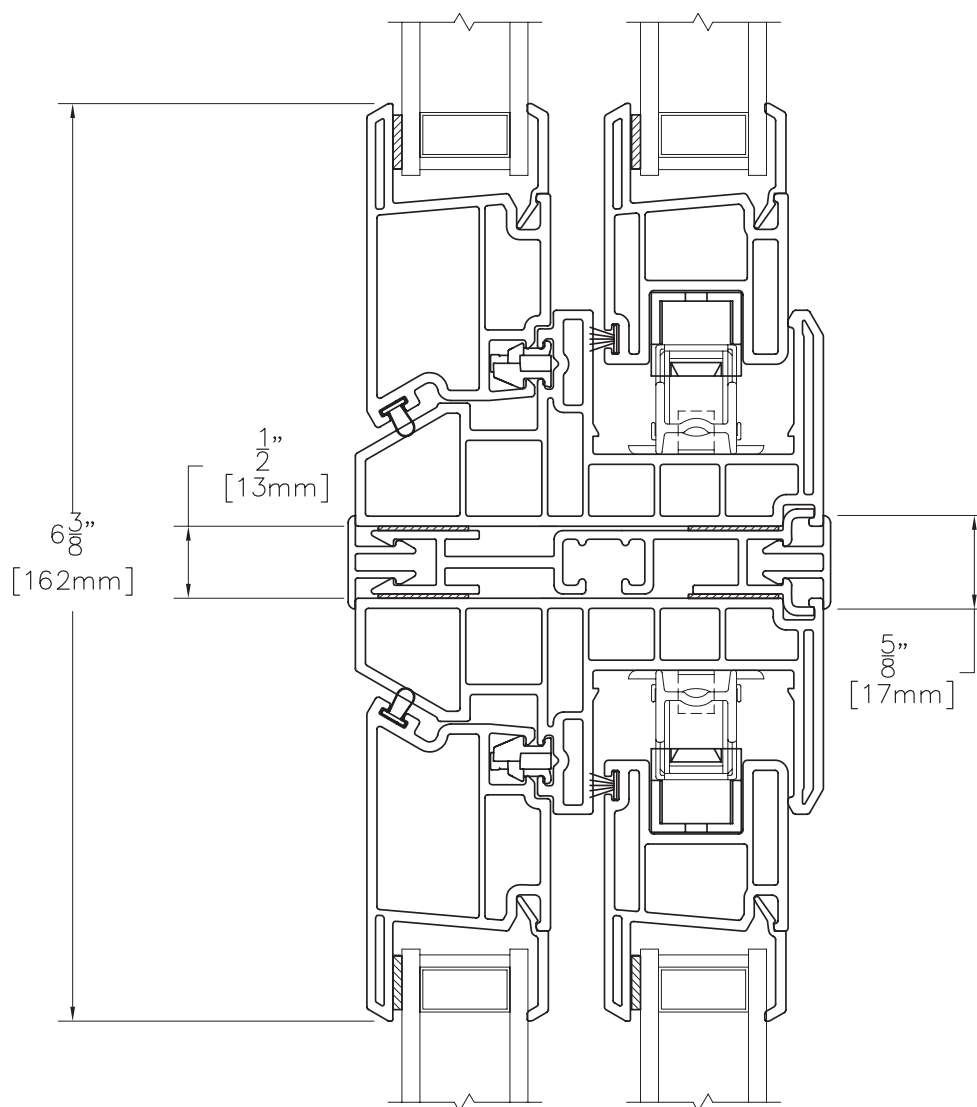
Scale: 6" = 1' (1/2 scale)

Assembly Drawing:

MULL 8120 8120

8000M
SERIES
MONTECITO

Vertical View



Scale: 6" = 1' (1/2 scale)

*Due to continual product research and development, details may be changed at any time. ©2008
Products shown are not available at all locations – confirm availability with your local Milgard representative.*

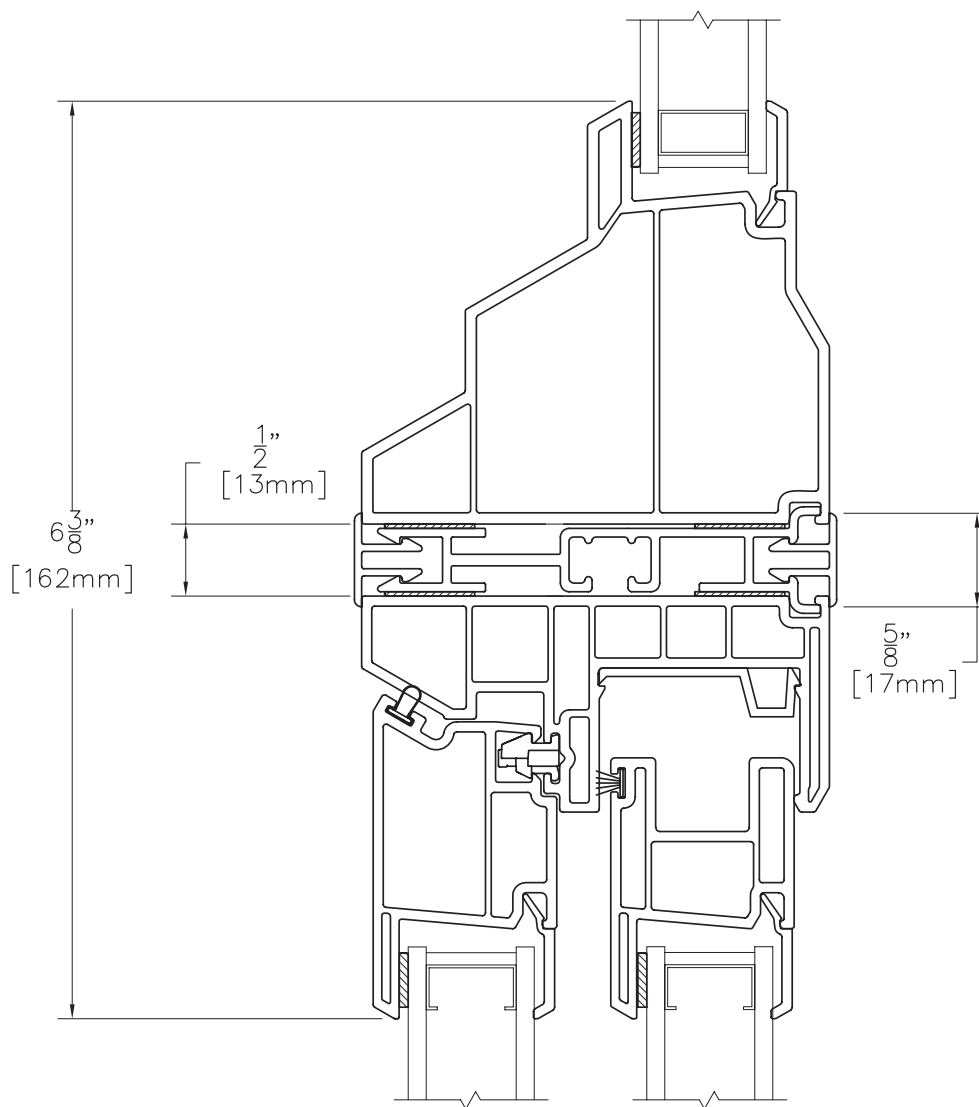
**8000M COMBO-10
NOVEMBER 2008**

Assembly Drawing:

MULL 8120 8320

8000M
SERIES
MONTECITO

Vertical View



Scale: 6" = 1' (1/2 scale)

8000M COMBO-11
NOVEMBER 2008

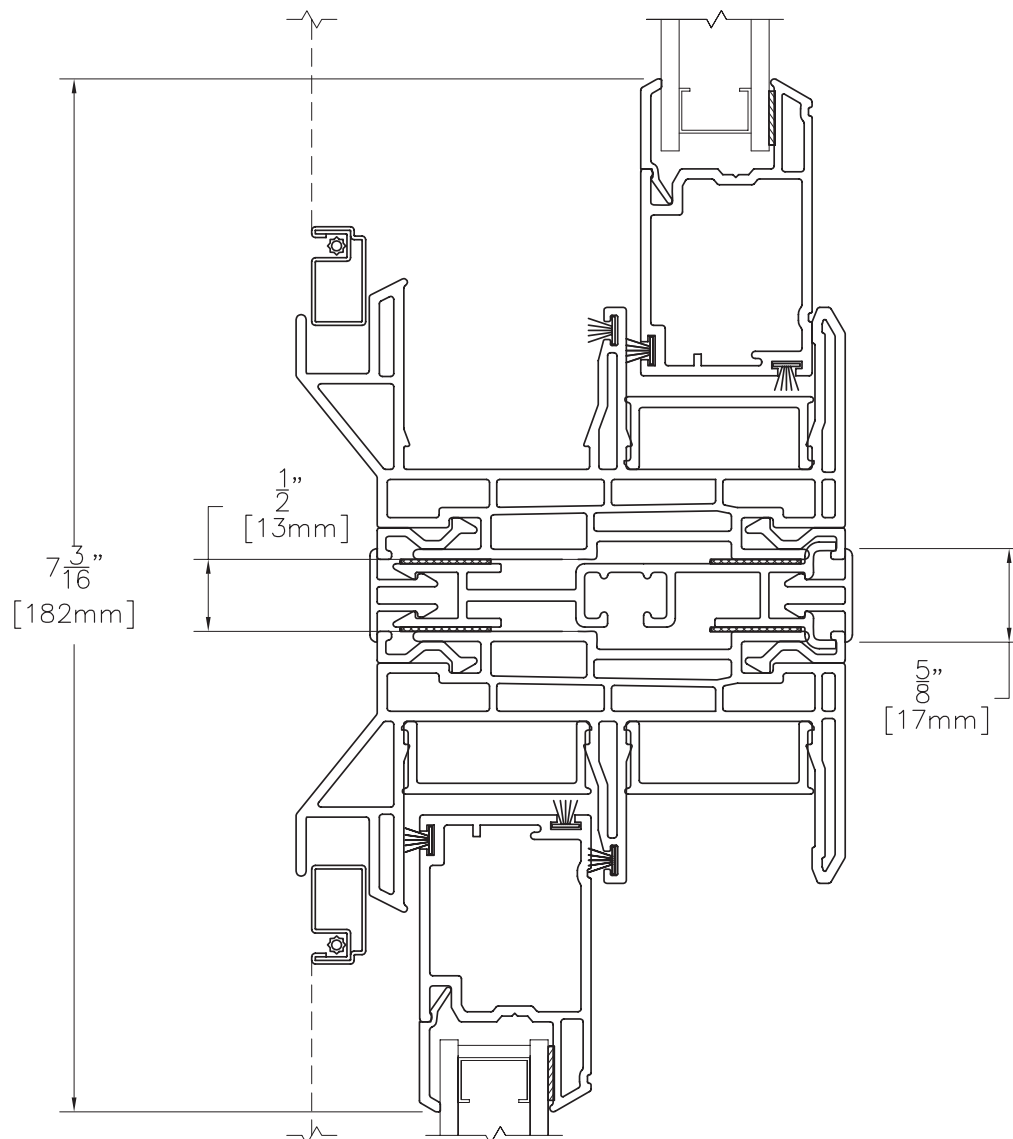
*Due to continual product research and development, details may be changed at any time. ©2008
Products shown are not available at all locations – confirm availability with your local Milgard representative.*

Assembly Drawing:

MULL 8125 8125

8000M
SERIES
MONTECITO

Vertical View



Scale: $6" = 1'$ (1/2 scale)

*Due to continual product research and development, details may be changed at any time. ©2008
Products shown are not available at all locations – confirm availability with your local Milgard representative.*

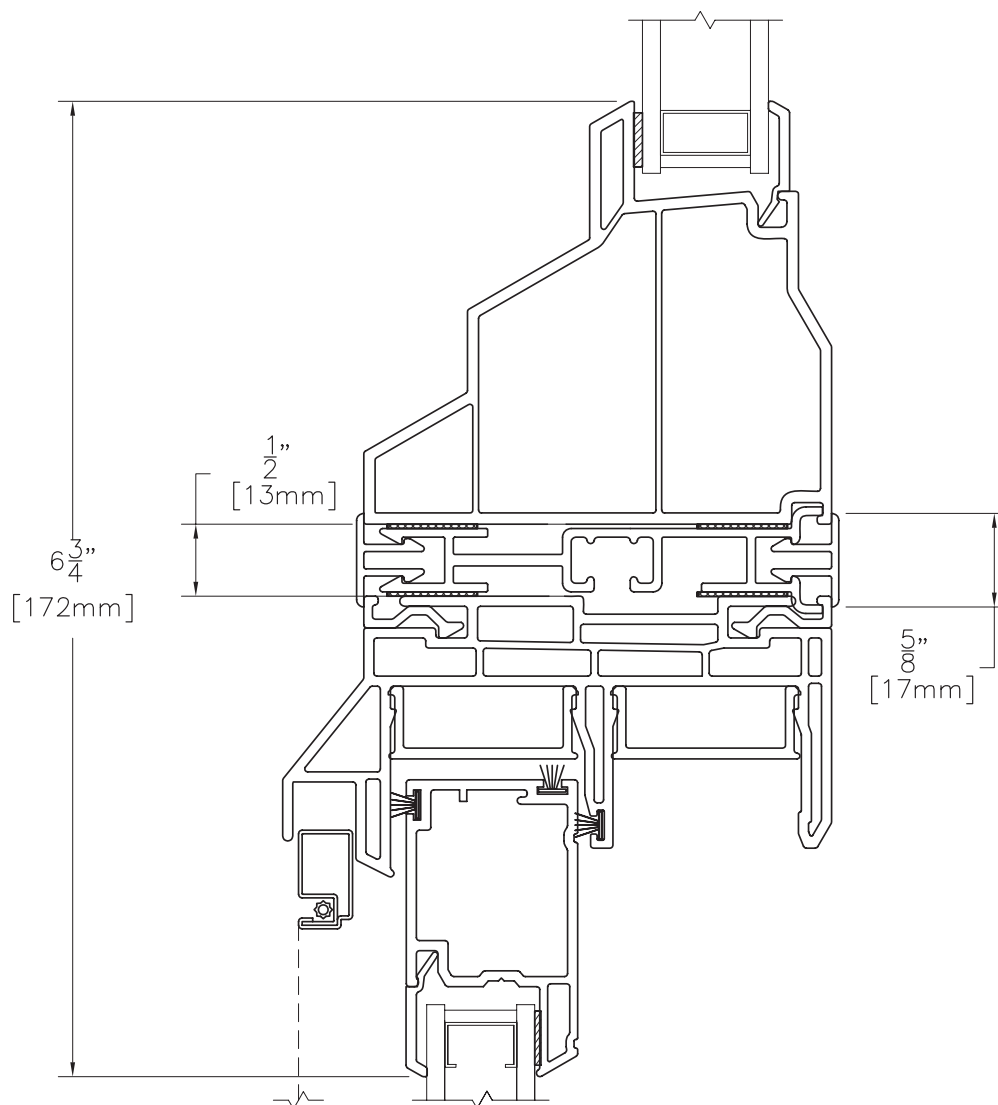
8000M COMBO-12
NOVEMBER 2008

Assembly Drawing:

MULL 8125 8320

8000M
SERIES
MONTECITO

Vertical View



Scale: 6" = 1' (1/2 scale)

8000M COMBO-13
NOVEMBER 2008

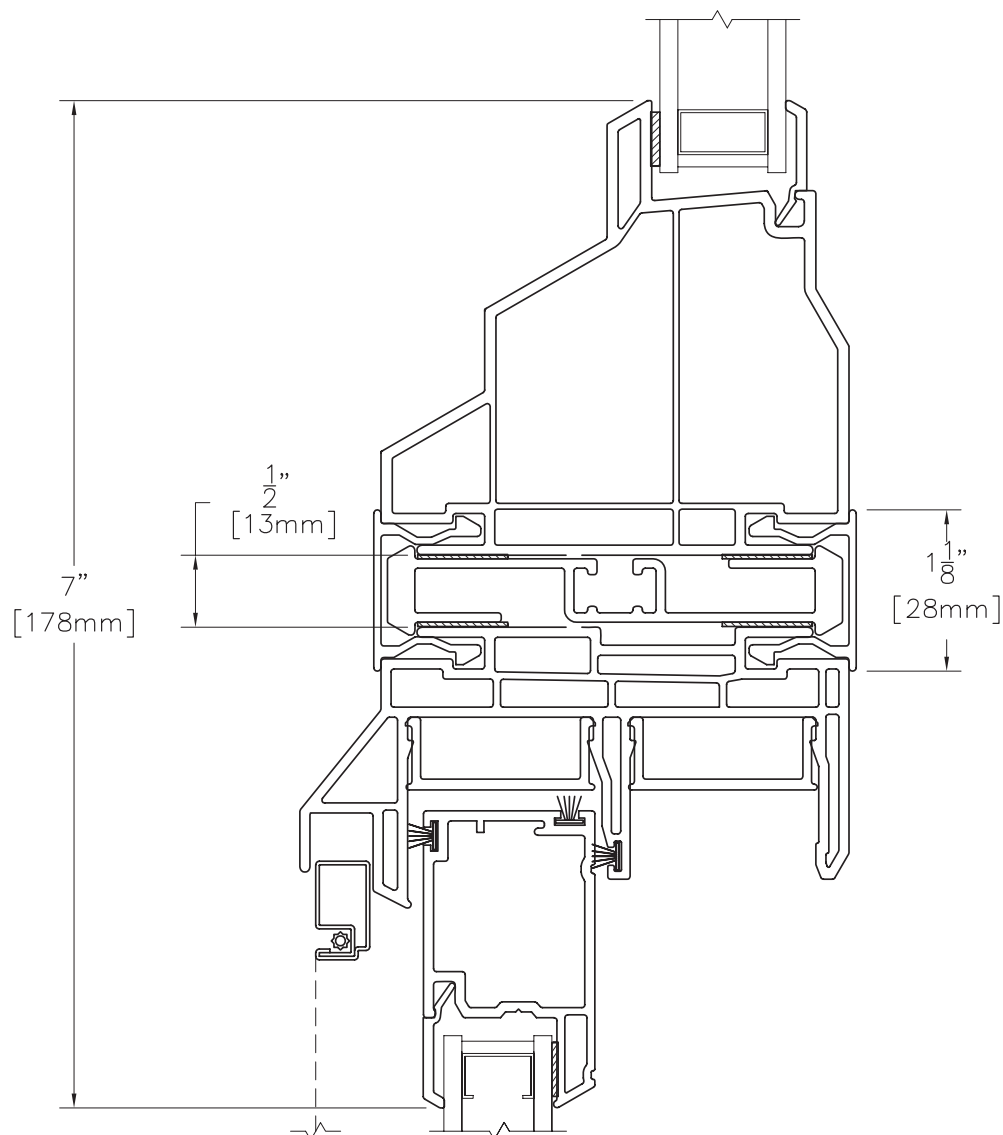
*Due to continual product research and development, details may be changed at any time. ©2008
Products shown are not available at all locations – confirm availability with your local Milgard representative.*

Assembly Drawing:

MULL 8125 8340

8000M
SERIES
MONTECITO

Vertical View



Scale: 6" = 1' (1/2 scale)

*Due to continual product research and development, details may be changed at any time. ©2008
Products shown are not available at all locations – confirm availability with your local Milgard representative.*

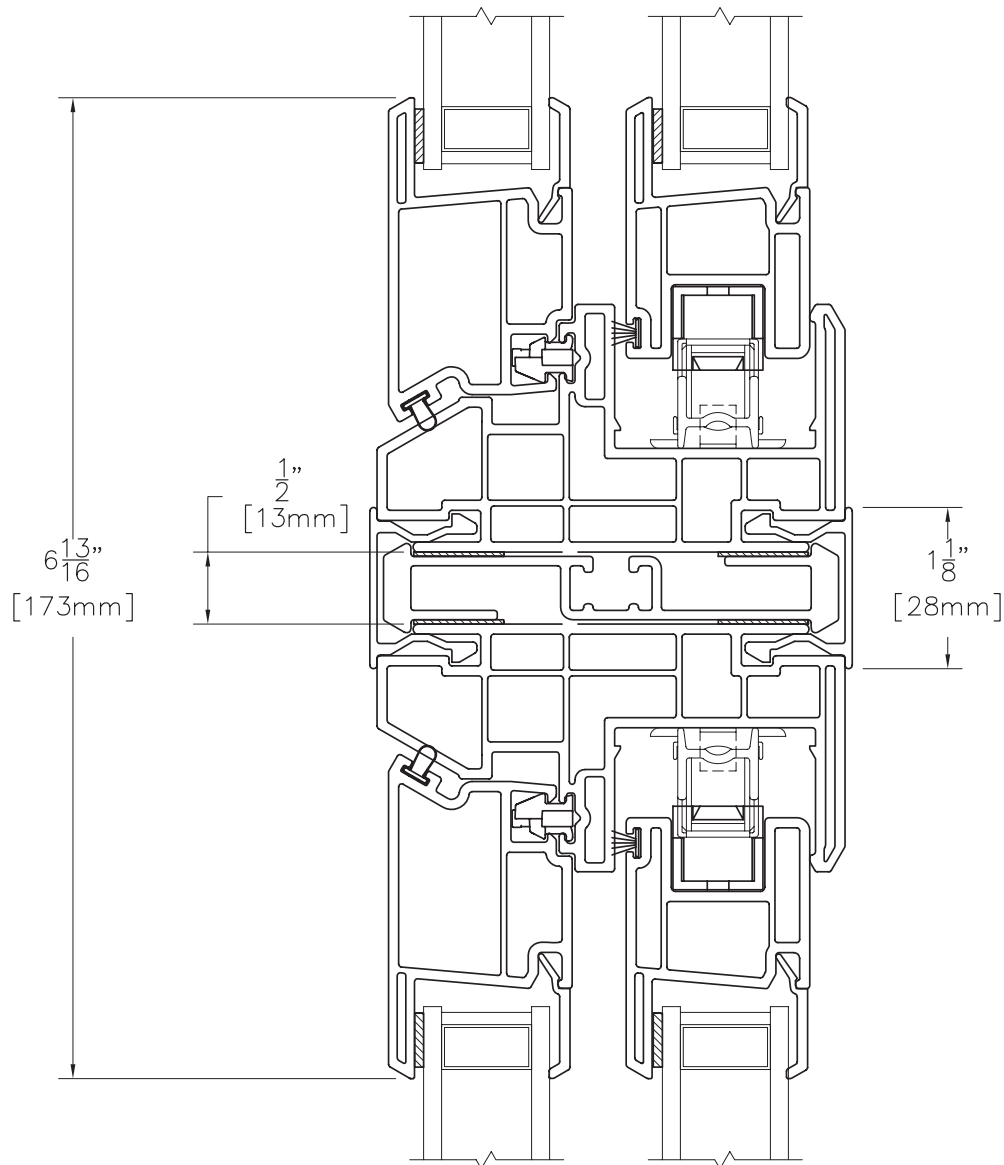
**8000M COMBO-14
NOVEMBER 2008**

Assembly Drawing:

MULL 8140 8140

8000M
SERIES
MONTECITO

Vertical View



Scale: 6" = 1' (1/2 scale)

8000M COMBO-15
NOVEMBER 2008

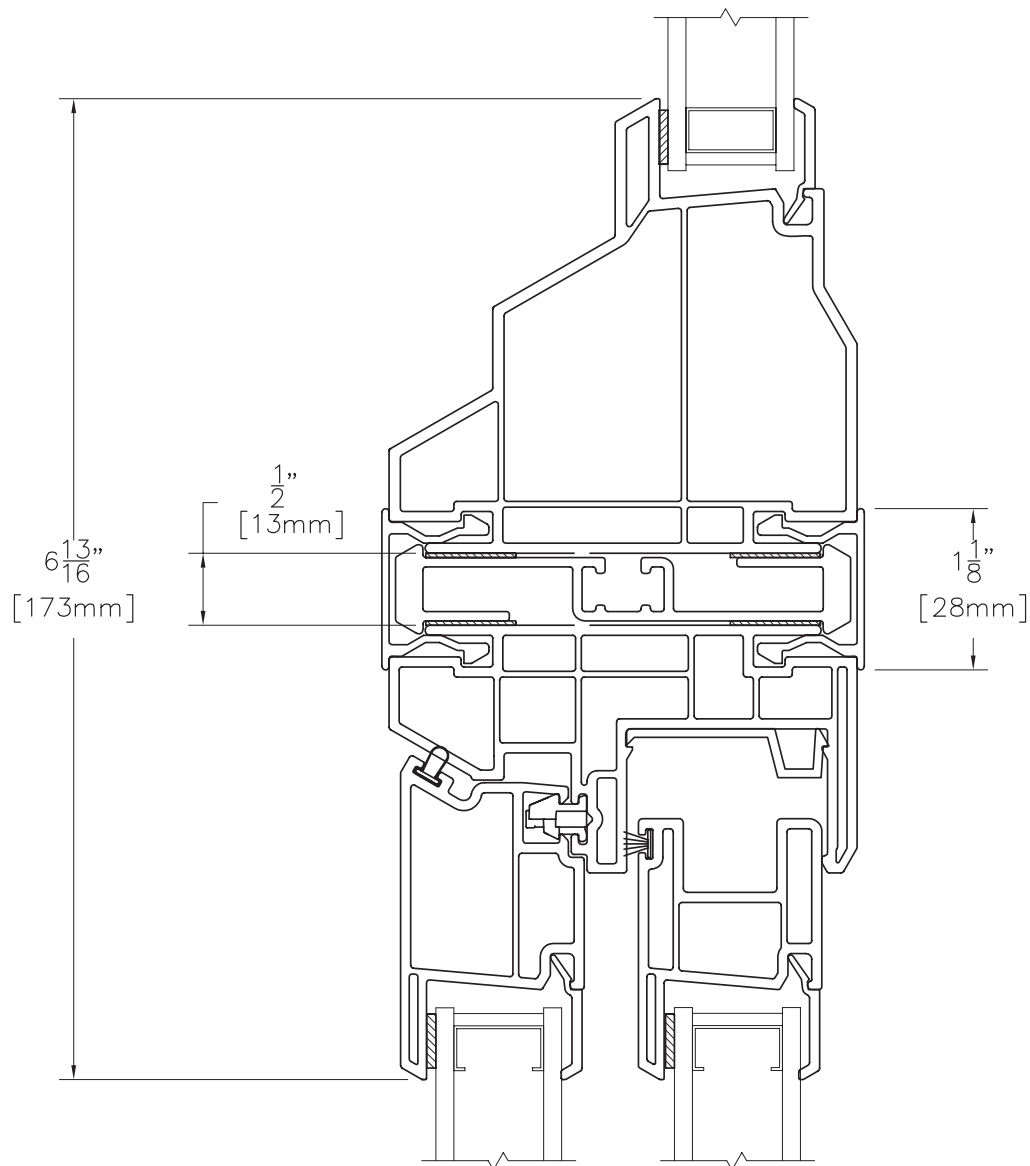
*Due to continual product research and development, details may be changed at any time. ©2008
Products shown are not available at all locations – confirm availability with your local Milgard representative.*

Assembly Drawing:

MULL 8140 8340

8000M
SERIES
MONTECITO

Vertical View



Scale: 6" = 1' (1/2 scale)

*Due to continual product research and development, details may be changed at any time. ©2008
Products shown are not available at all locations – confirm availability with your local Milgard representative.*

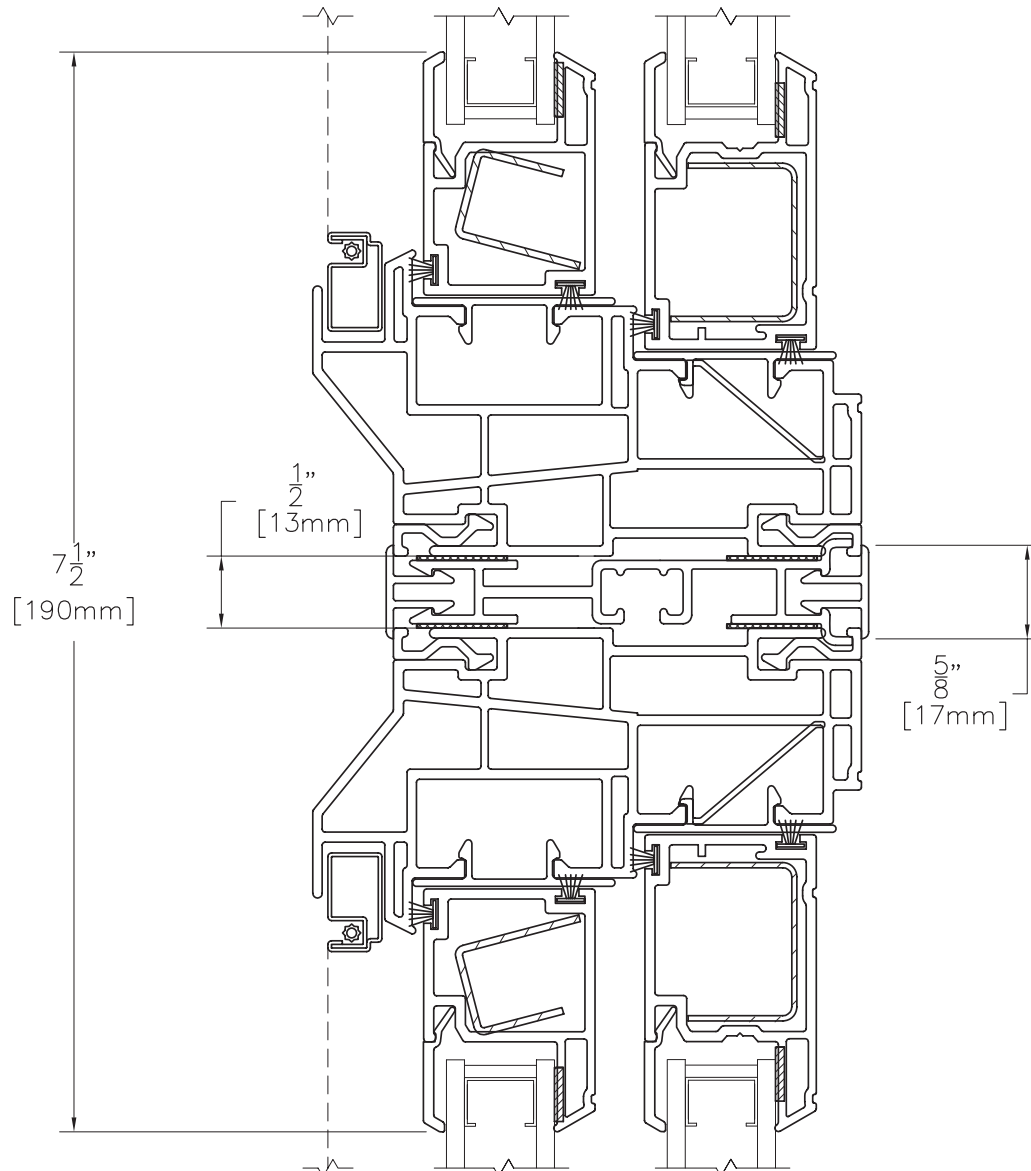
**8000M COMBO-16
NOVEMBER 2008**

Assembly Drawing:

MULL 8225 8225

8000M
SERIES
MONTECITO

Vertical View



Scale: 6" = 1' (1/2 scale)

8000M COMBO-17
NOVEMBER 2008

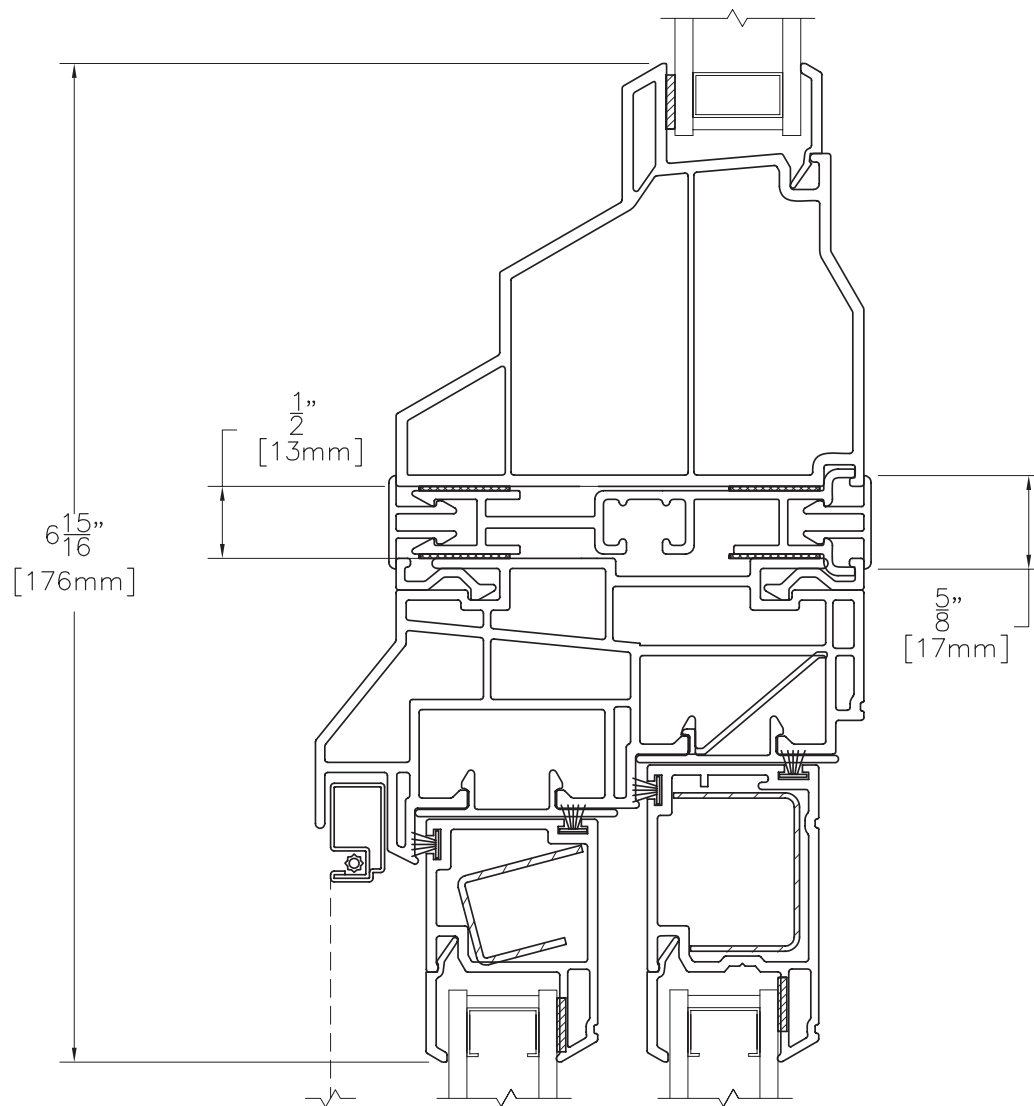
*Due to continual product research and development, details may be changed at any time. ©2008
Products shown are not available at all locations – confirm availability with your local Milgard representative.*

Assembly Drawing:

MULL 8225 8320

8000M
SERIES
MONTECITO

Vertical View



Scale: 6" = 1' (1/2 scale)

*Due to continual product research and development, details may be changed at any time. ©2008
Products shown are not available at all locations – confirm availability with your local Milgard representative.*

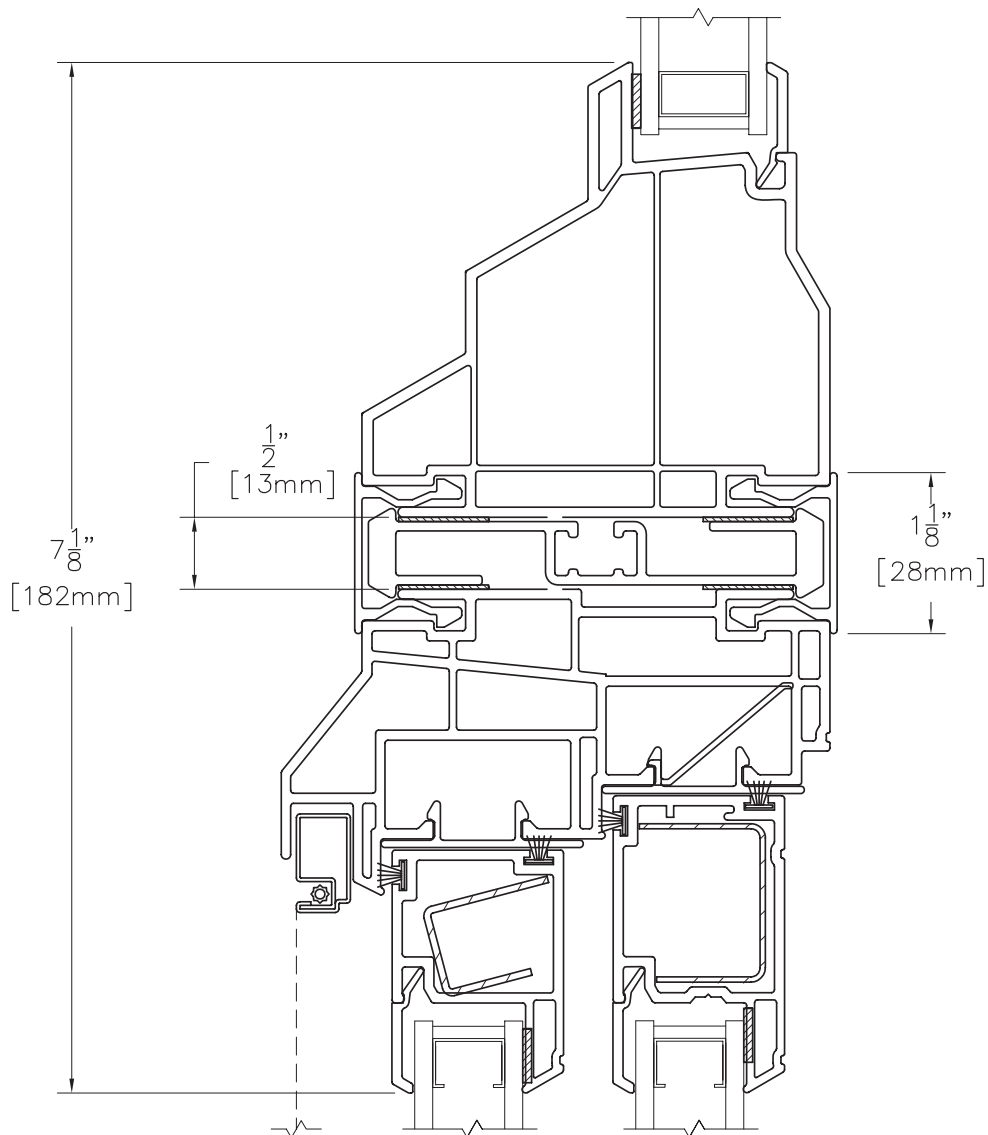
8000M COMBO-18
NOVEMBER 2008

Assembly Drawing:

MULL 8225 8340

8000M
SERIES
MONTECITO

Vertical View



Scale: 6" = 1' (1/2 scale)

8000M COMBO-19
NOVEMBER 2008

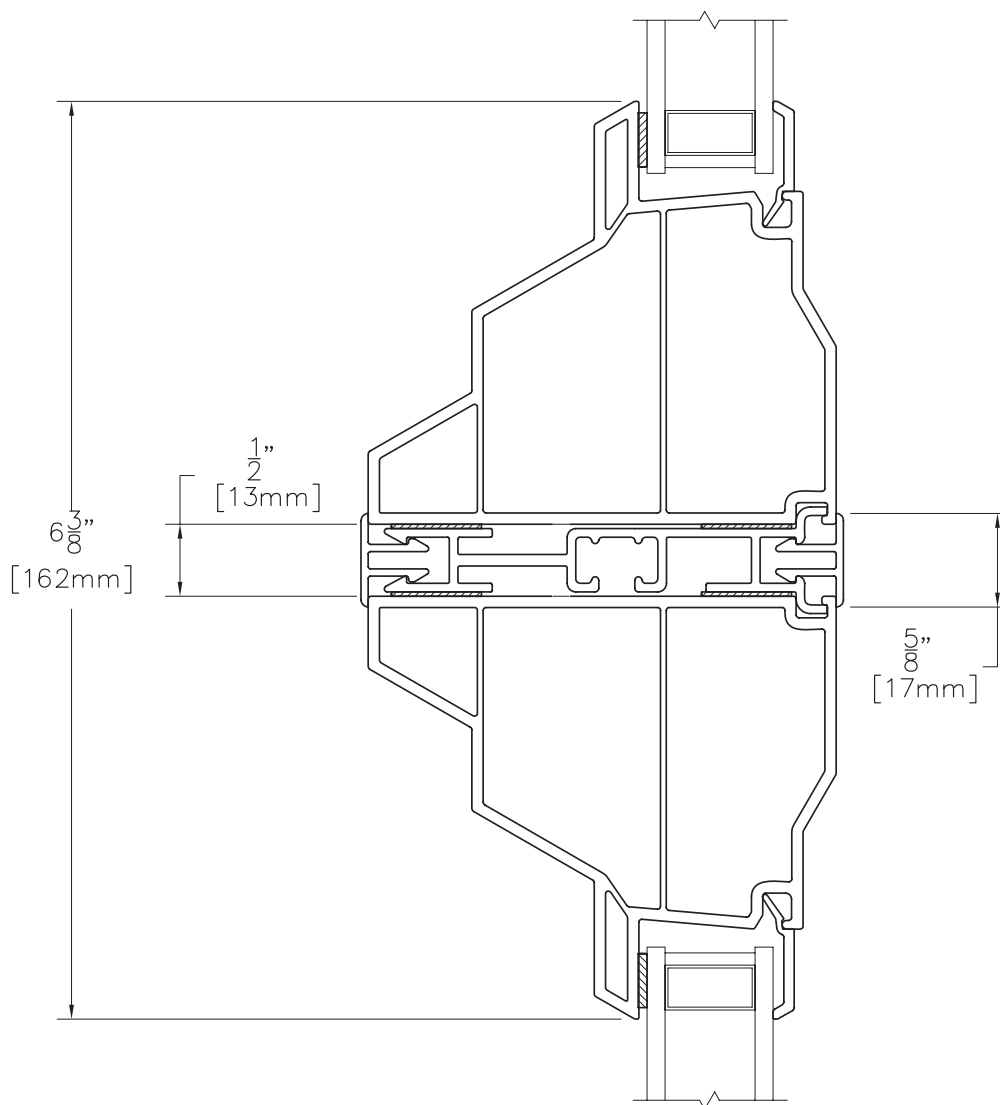
*Due to continual product research and development, details may be changed at any time. ©2008
Products shown are not available at all locations – confirm availability with your local Milgard representative.*

Assembly Drawing:

MULL 8320 8320

8000M
SERIES
MONTECITO

Vertical View



Scale: 6" = 1' (1/2 scale)

*Due to continual product research and development, details may be changed at any time. ©2008
Products shown are not available at all locations – confirm availability with your local Milgard representative.*

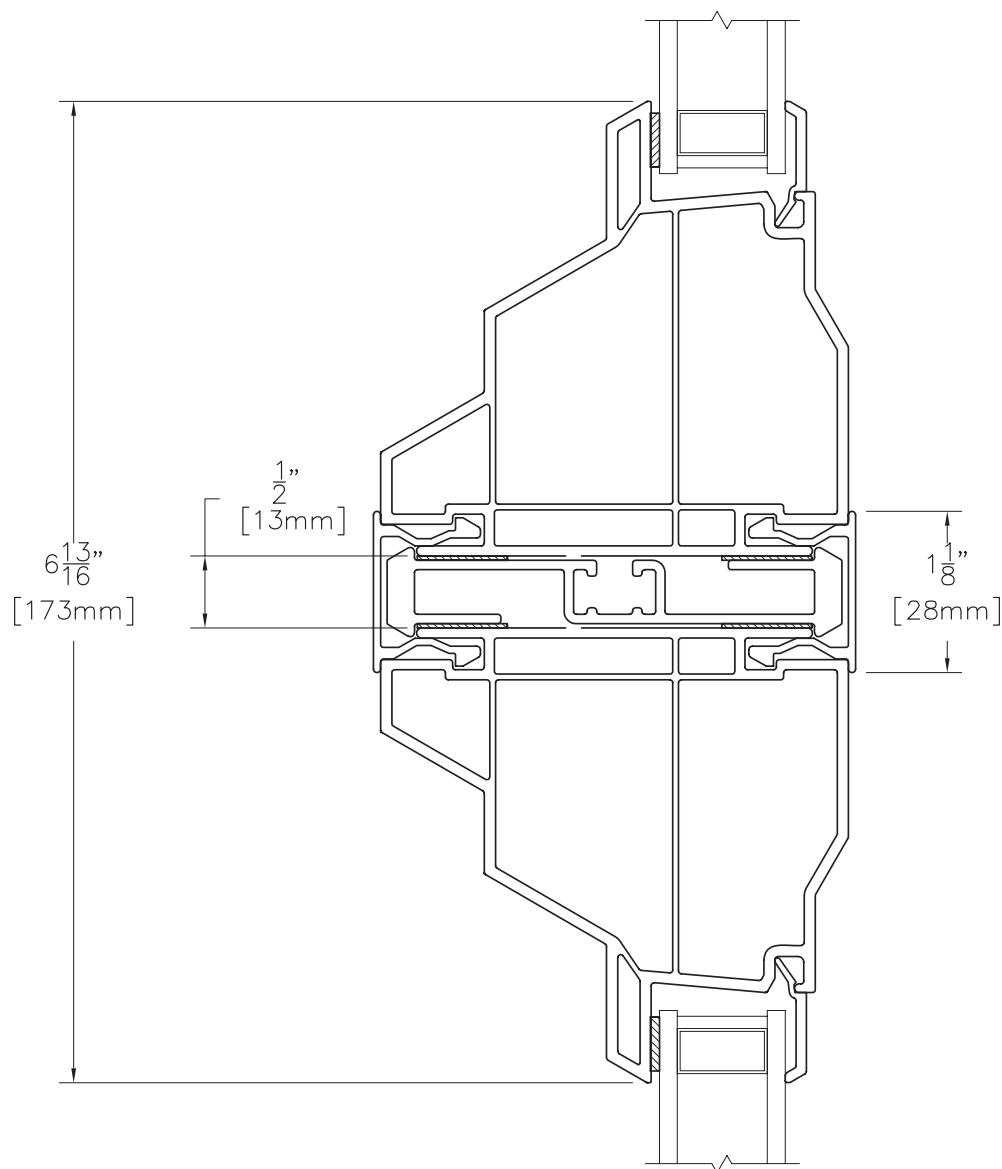
**8000M COMBO-20
NOVEMBER 2008**

Assembly Drawing:

MULL 8340 8340

8000M
SERIES
MONTECITO

Vertical View



Scale: 6" = 1' (1/2 scale)

8000M COMBO-21
NOVEMBER 2008

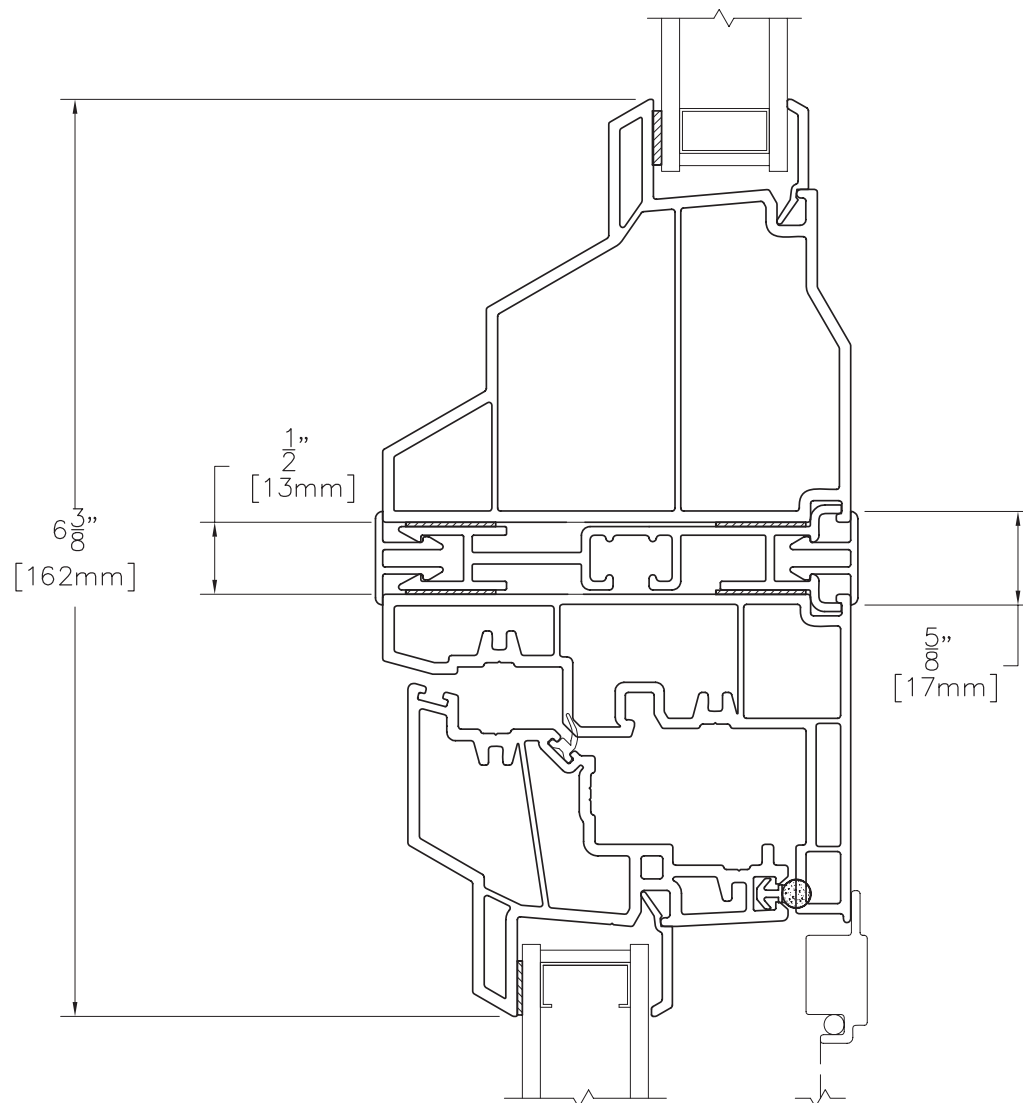
*Due to continual product research and development, details may be changed at any time. ©2008
Products shown are not available at all locations – confirm availability with your local Milgard representative.*

Assembly Drawing:

MULL 8420 8320

8000M
SERIES
MONTECITO

Vertical View



Scale: 6" = 1' (1/2 scale)

*Due to continual product research and development, details may be changed at any time. ©2008
Products shown are not available at all locations – confirm availability with your local Milgard representative.*

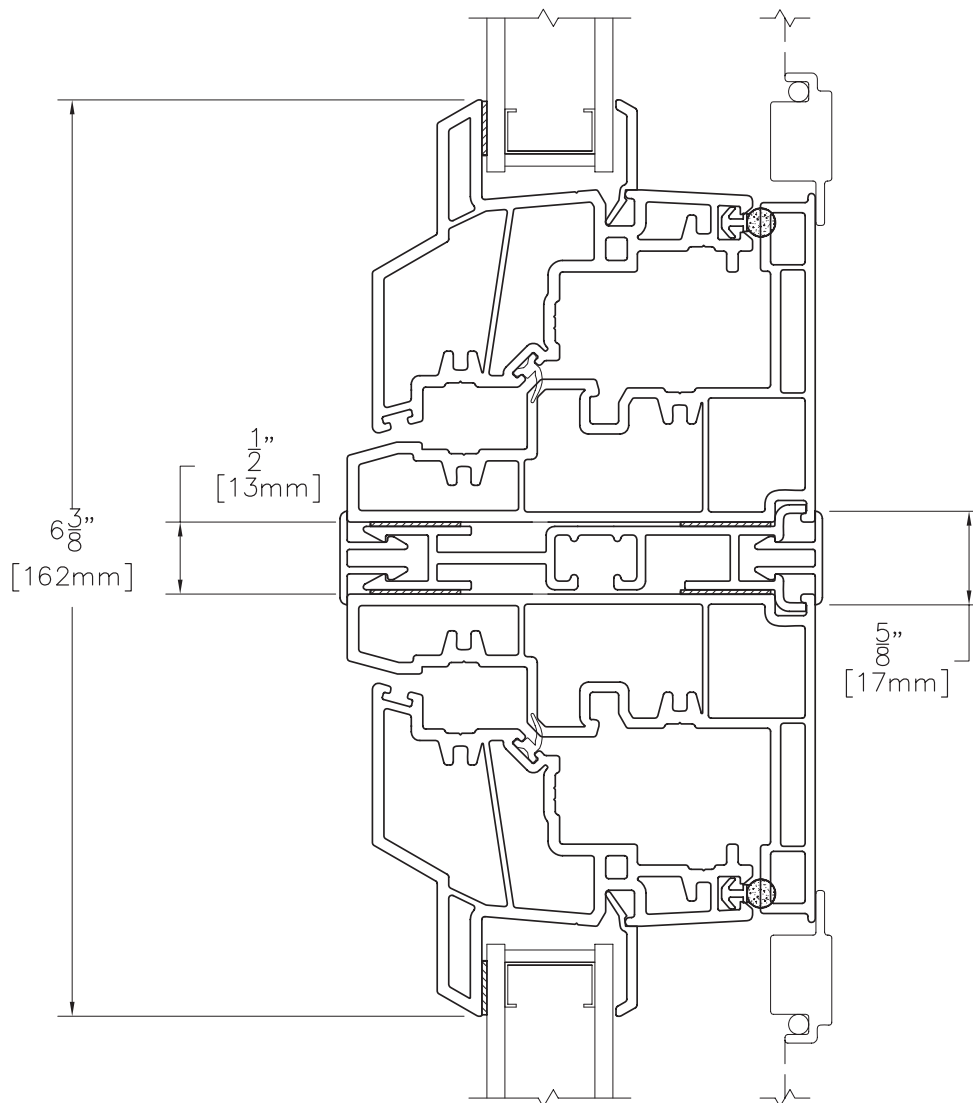
**8000M COMBO-22
NOVEMBER 2008**

Assembly Drawing:

MULL 8420 8420

8000M
SERIES
MONTECITO

Vertical View



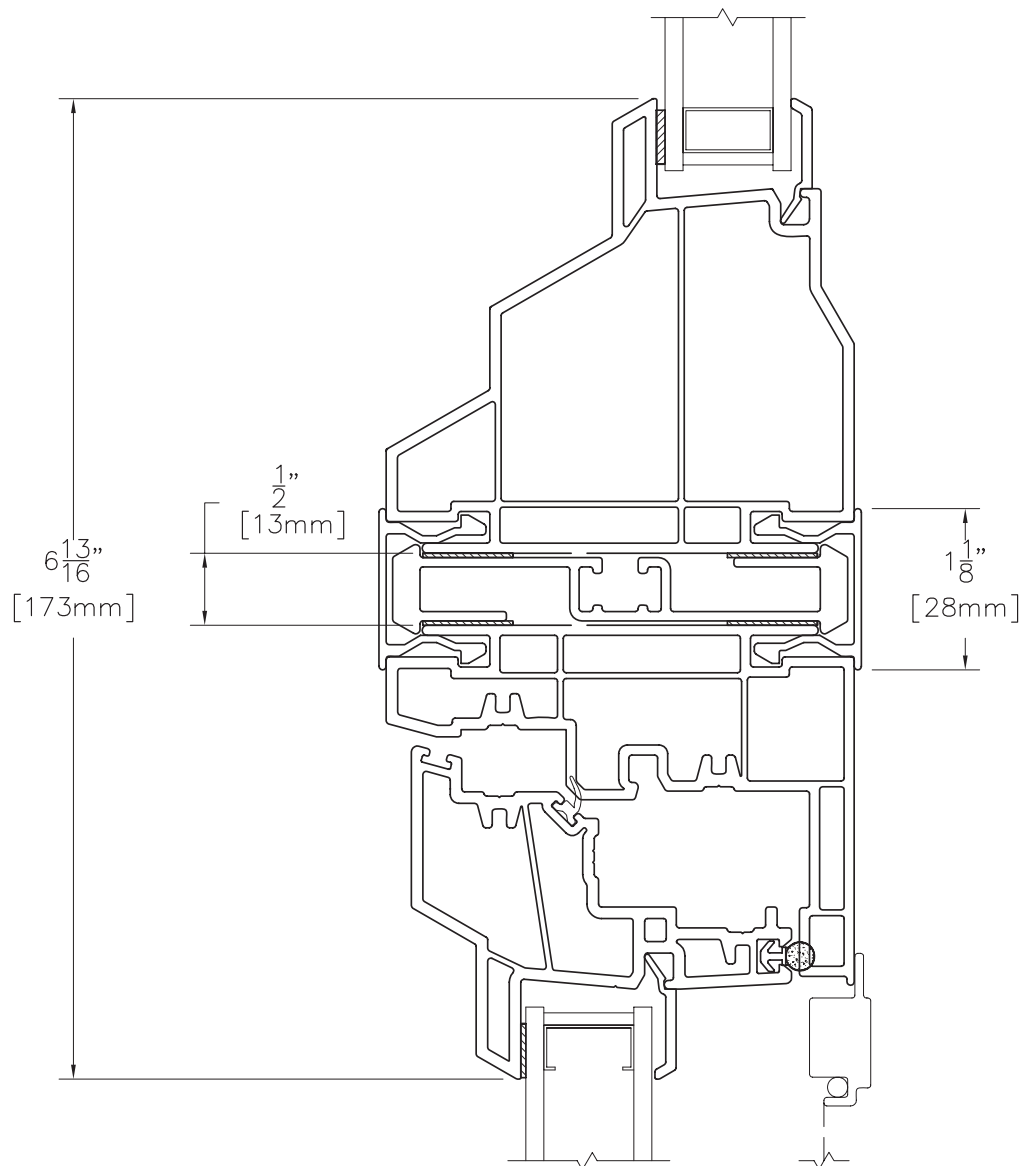
Scale: 6" = 1' (1/2 scale)

Assembly Drawing:

MULL 8440 8340

8000M
SERIES
MONTECITO

Vertical View



Scale: 6" = 1' (1/2 scale)

*Due to continual product research and development, details may be changed at any time. ©2008
Products shown are not available at all locations – confirm availability with your local Milgard representative.*

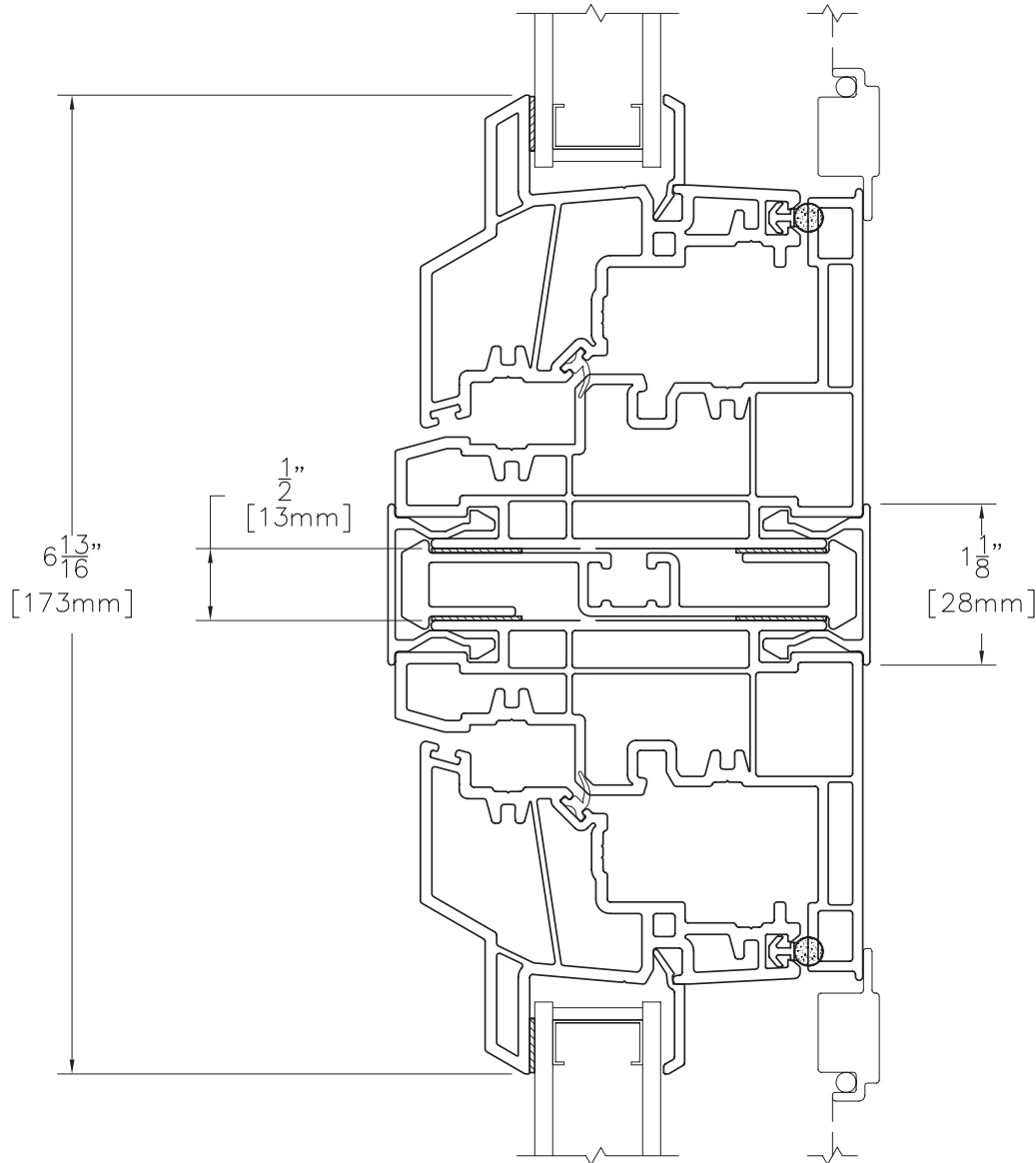
**8000M COMBO-24
NOVEMBER 2008**

Assembly Drawing:

MULL 8440 8440

8000M
SERIES
MONTECITO

Vertical View



Scale: 6" = 1' (1/2 scale)

8000M COMBO-25
NOVEMBER 2008

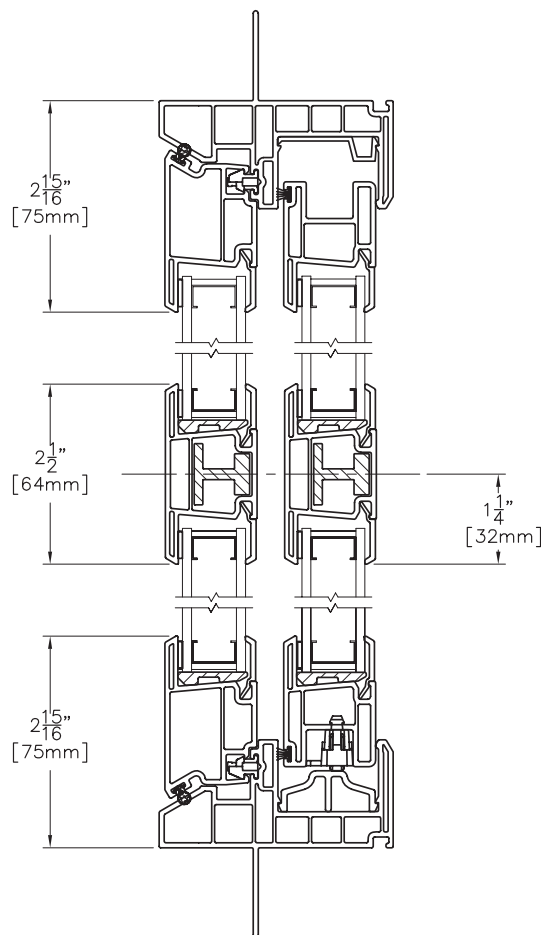
*Due to continual product research and development, details may be changed at any time. ©2008
Products shown are not available at all locations – confirm availability with your local Milgard representative.*

Assembly Drawing:

TDL 8120 Half Vent

8000M
SERIES
MONTECITO

Vertical View



Scale: 6" = 1' (1/2 scale)

*Due to continual product research and development, details may be changed at any time. ©2008
Products shown are not available at all locations – confirm availability with your local Milgard representative.*

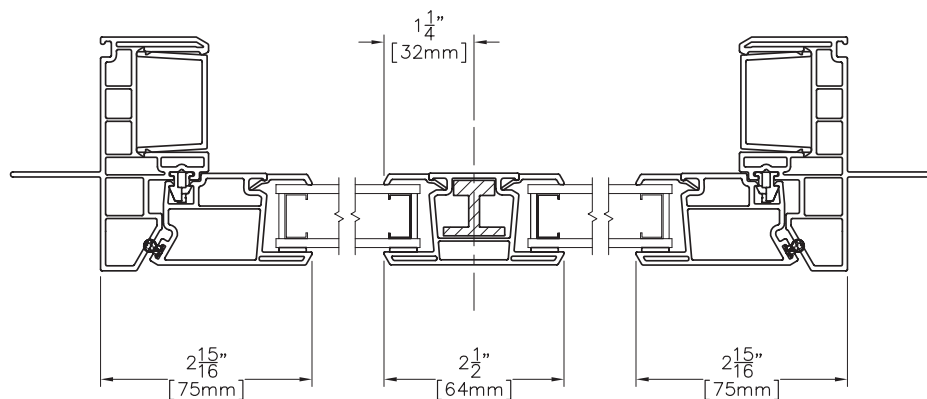
**8000M COMBO-26
NOVEMBER 2008**

Assembly Drawing:

TDL 8220 Picture Window

8000M
SERIES
MONTECITO

Horizontal View



Scale: 6" = 1' (1/2 scale)